

Part 2 Local Plan for Corby

Publication Draft (Pre-Submission) Consultation

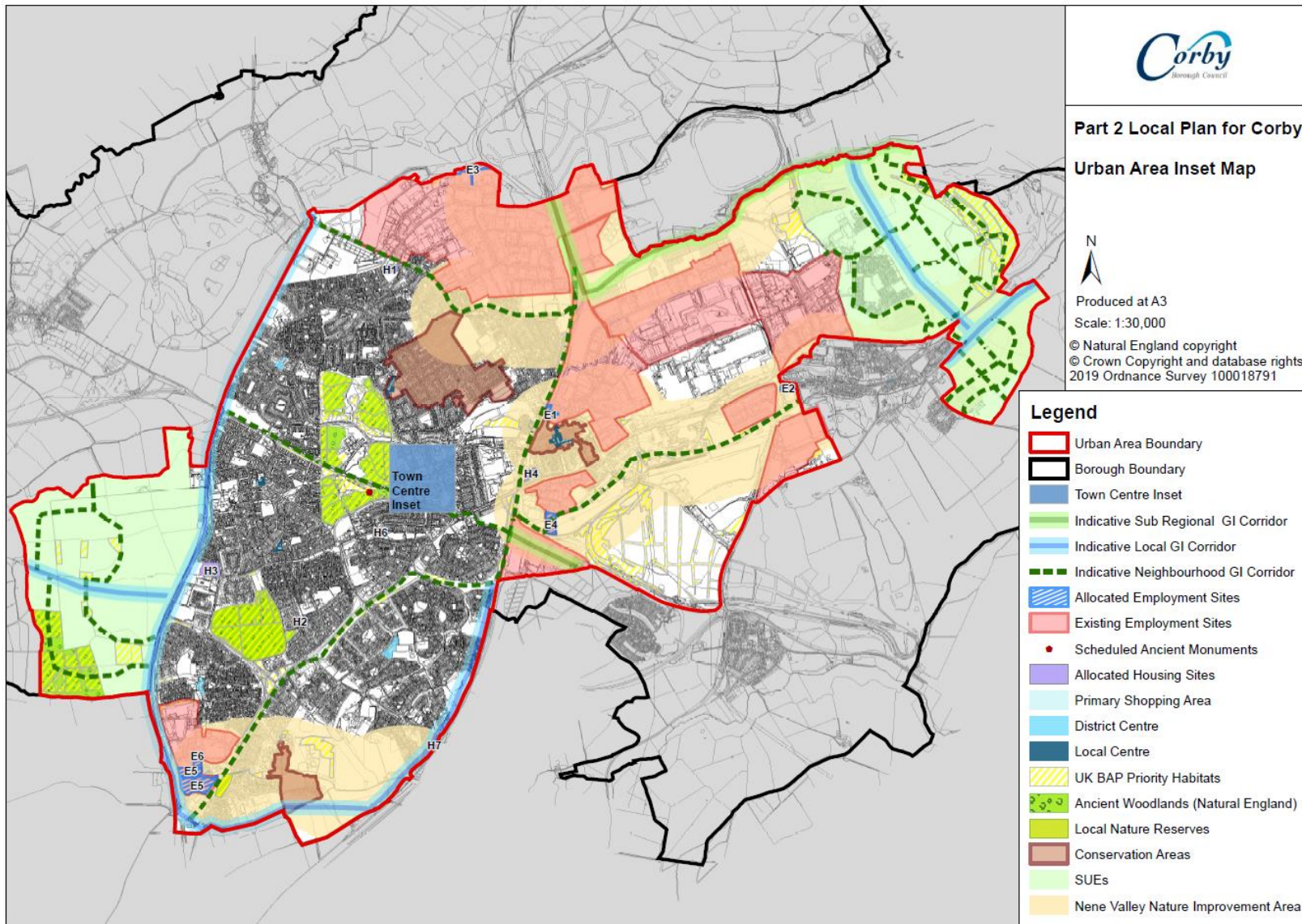
Erratum

The following amendments are required to correct factual errors within the Publication Draft (Pre-submission) Part 2 Local Plan. The list will be added to, if and when other errors are discovered.

Section	Settlement	Amendment
Policies Map	Urban area and Weldon village	Appendix 5.2 Urban Area and 5.10 Weldon did not include the GIS layer for Primary Shopping Areas. This has been corrected and presented below. In addition, the base mapping layer in Appendix 5.2 Urban Area Inset Map has been updated.

Last update on 12/08/2019

Correction to Appendix 5.2 Urban Area



Correction to Appendix 5.10 Weldon

